


## Certificate of Analysis

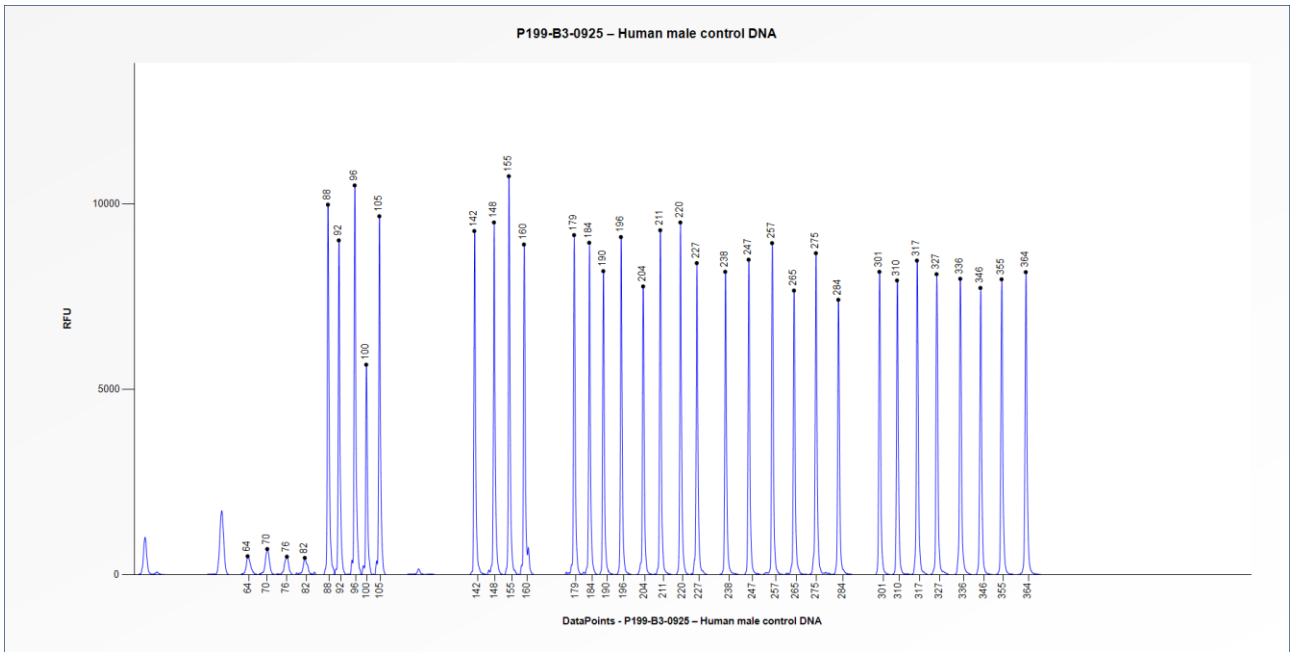
### SALSA® MLPA® Probemix P199 HEXA

<b>Catalogue #</b>	P199-025R, P199-050R, P199-100R	
<b>Product name</b>	SALSA® MLPA® Probemix P199 HEXA (hereafter: P199 HEXA)	
<b>LOT</b>	B3-0925	
<b>Shipping conditions</b>	Dry ice or cooling elements.	
	Expiration date: March 2031, when stored at recommended conditions.	
<b>Quality control specifications</b>	<ul style="list-style-type: none"> <li>- Sufficient distance between peaks, absence of extra or shoulder peaks, and completeness of hybridisation of each individual probe, as tested on Applied Biosystems sequencer.</li> <li>- Standard deviation between the final ratios of each individual probe <math>\leq 0.10</math>, when tested on 23 different DNA samples of healthy individuals, extracted by various methods. Note that the standard deviation for the mutation-specific probes is not determined because no signal is generated on DNA from healthy individuals.</li> <li>- Each individual probe meets reaction-specific criteria when tested on a single DNA sample under various experimental conditions.</li> <li>- No-DNA controls result in only five major peaks shorter than 121 nucleotides (nt): four Q-fragments at 64, 70, 76 and 82 nt, and one peak in the range of 0-40 nt corresponding to the unused portion of the fluorescent PCR primer. Non-specific peaks longer than 121 nt AND with a height &lt;25% of the median of the four Q-fragments are not expected to affect MLPA reactions when sufficient (50-250 ng) sample DNA is used.</li> </ul>	<b>Test result</b>
		<b>PASS</b>

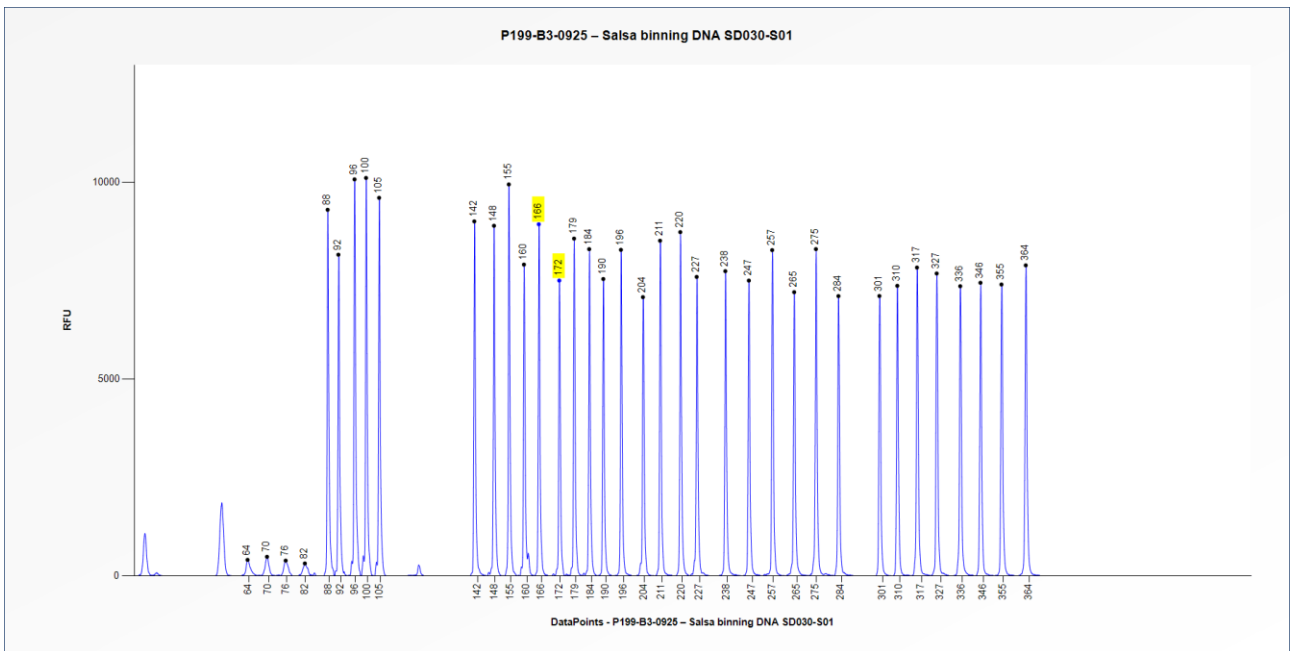
<b>More information:</b> <a href="http://www.mrcholland.com">www.mrcholland.com</a> ; <a href="http://www.mrcholland.eu">www.mrcholland.eu</a>	
	MRC Holland BV; Willem Schoutenstraat 1 1057 DL, Amsterdam, The Netherlands
E-mail	<a href="mailto:info@mrcholland.com">info@mrcholland.com</a> (information & technical questions) <a href="mailto:order@mrcholland.com">order@mrcholland.com</a> (orders)
Phone	+31 888 657 200

# Certificate of Analysis

## P199-B3 HEXA sample pictures



**Figure 1.** Capillary electrophoresis pattern from a sample of approximately 50 ng human male control DNA analysed with P199 HEXA (B3-0925).



**Figure 2.** Capillary electrophoresis pattern from SALSA® Binning DNA SD030-S01 (approximately 50 ng) analysed with P199 HEXA (B3-0925). The location of the *HEXA* c.1278insTATC and *HEXA* IVS12+1G>C mutation-specific probes at 166 nt and 172 nt, respectively, are indicated.

**This lot was certified by MRC Holland on 15 May 2026.**

This certificate is a declaration of analysis at the time of the manufacturing process. All assays were run in compliance with manufacturer's instructions for use.

<b>Implemented changes in the COA</b>
Version 02 – 23 June 2026 (7) - Adjusted expiry date. Version 01 – 15 May 2026 (7) - Not applicable, new document.