


Certificate of Analysis

SALSA® MLPA® Probemix ME053 BRCA1-BRCA2-RAD51C

Catalogue #	ME053-025R, ME053-050R, ME053-100R	
Product name	SALSA® MLPA® Probemix ME053 BRCA1-BRCA2-RAD51C (hereafter: ME053 BRCA1-BRCA2-RAD51C)	
LOT	A1-1025	
Shipping conditions	Dry ice or cooling elements.	
	Expiration date: March 2031, when stored at recommended conditions. This product should not be frozen/thawed more than 25 times.	
Quality control specifications	<ul style="list-style-type: none"> - Sufficient distance between peaks, absence of extra or shoulder peaks, and completeness of hybridisation and HhaI digestion of each individual probe, as tested on Applied Biosystems sequencer. - Standard deviation between the final ratios of each individual probe ≤ 0.10, when tested on 23 different DNA samples of healthy individuals, extracted by various methods. - Each individual probe meets reaction-specific criteria when tested on a single DNA sample under various experimental conditions. - No-DNA controls result in only five major peaks shorter than 121 nucleotides (nt): four Q-fragments at 64, 70, 76 and 82 nt, and one peak in the range of 0-40 nt corresponding to the unused portion of the fluorescent PCR primer. Non-specific peaks longer than 121 nt AND with a height <25% of the median of the four Q-fragments are not expected to affect MLPA reactions when sufficient (50-250 ng) sample DNA is used. 	Test result
		PASS

More information: www.mrcholland.com ; www.mrcholland.eu	
	MRC Holland bv; Willem Schoutenstraat 1 1057 DL, Amsterdam, The Netherlands
E-mail	info@mrcholland.com (information & technical questions) order@mrcholland.com (orders)
Phone	+31 888 657 200

Certificate of Analysis

SALSA MLPA Probemix

ME053-A1 BRCA1-BRCA2-RAD51C sample pictures

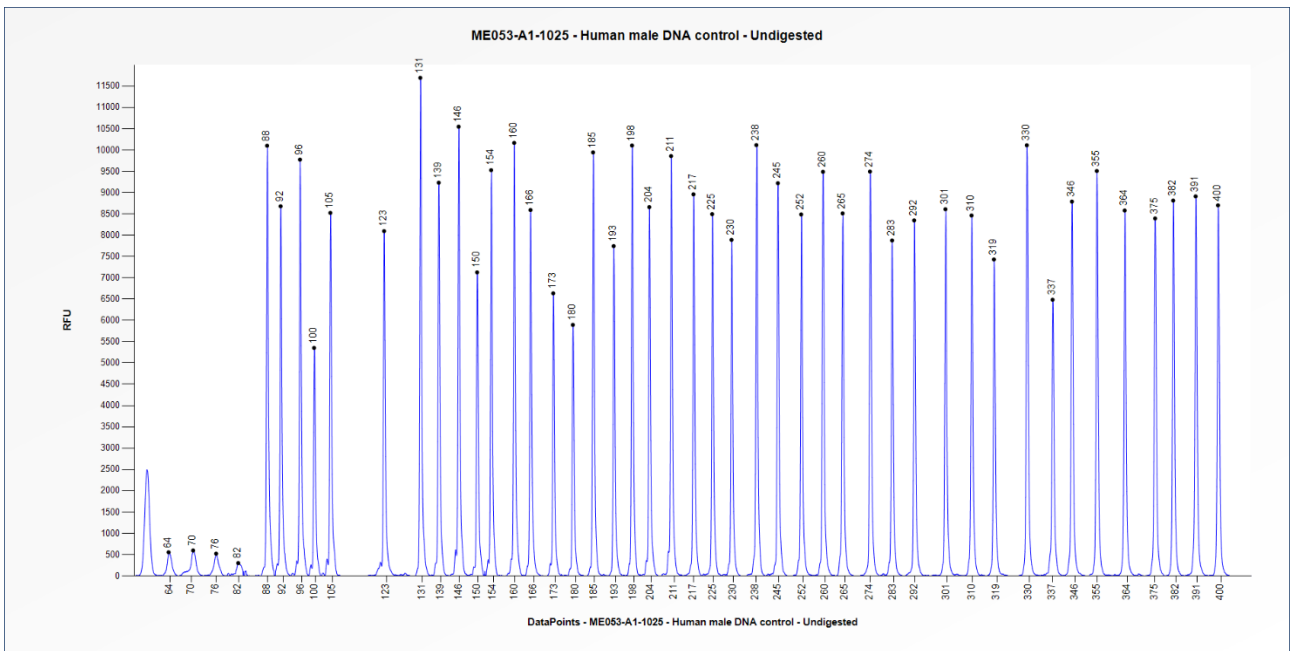


Figure 1. Capillary electrophoresis pattern from a sample of approximately 50 ng undigested human male control DNA analysed with ME053 BRCA1-BRCA2-RAD51C (A1-1025) for the quantification of copy numbers.

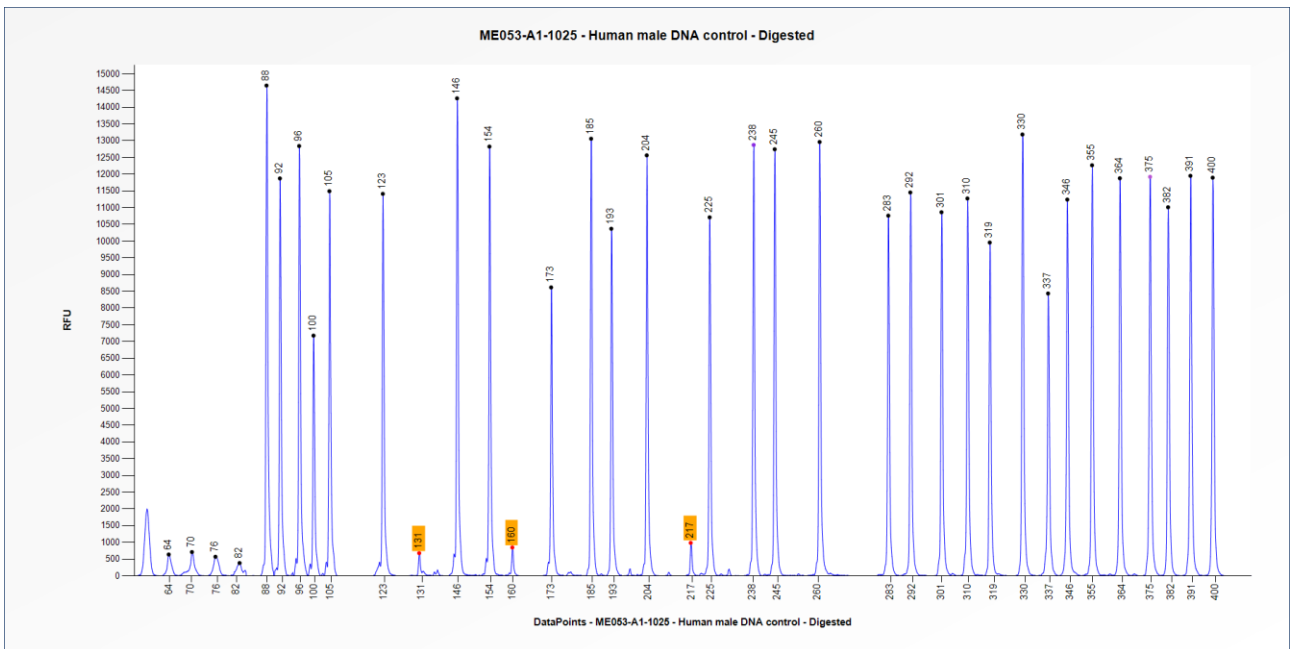


Figure 2. Capillary electrophoresis pattern from a sample of approximately 50 ng digested human male control DNA analysed with ME053 BRCA1-BRCA2-RAD51C (A1-1025) to determine the methylation status. The methylation-specific probes at 131, 160 and 217 nt are not completely digested in DNA samples derived from blood, and thus might have up to 15% background signal.

This lot was certified by MRC Holland on 20 March 2026.

This certificate is a declaration of analysis at the time of the manufacturing process. All assays were run in compliance with manufacturer's instructions for use.

Implemented changes in the COA
Version 02 – 23 June 2026 (5) - Adjusted expiry date.
Version 01 – 20 March 2026 (5) - Not applicable, new document.