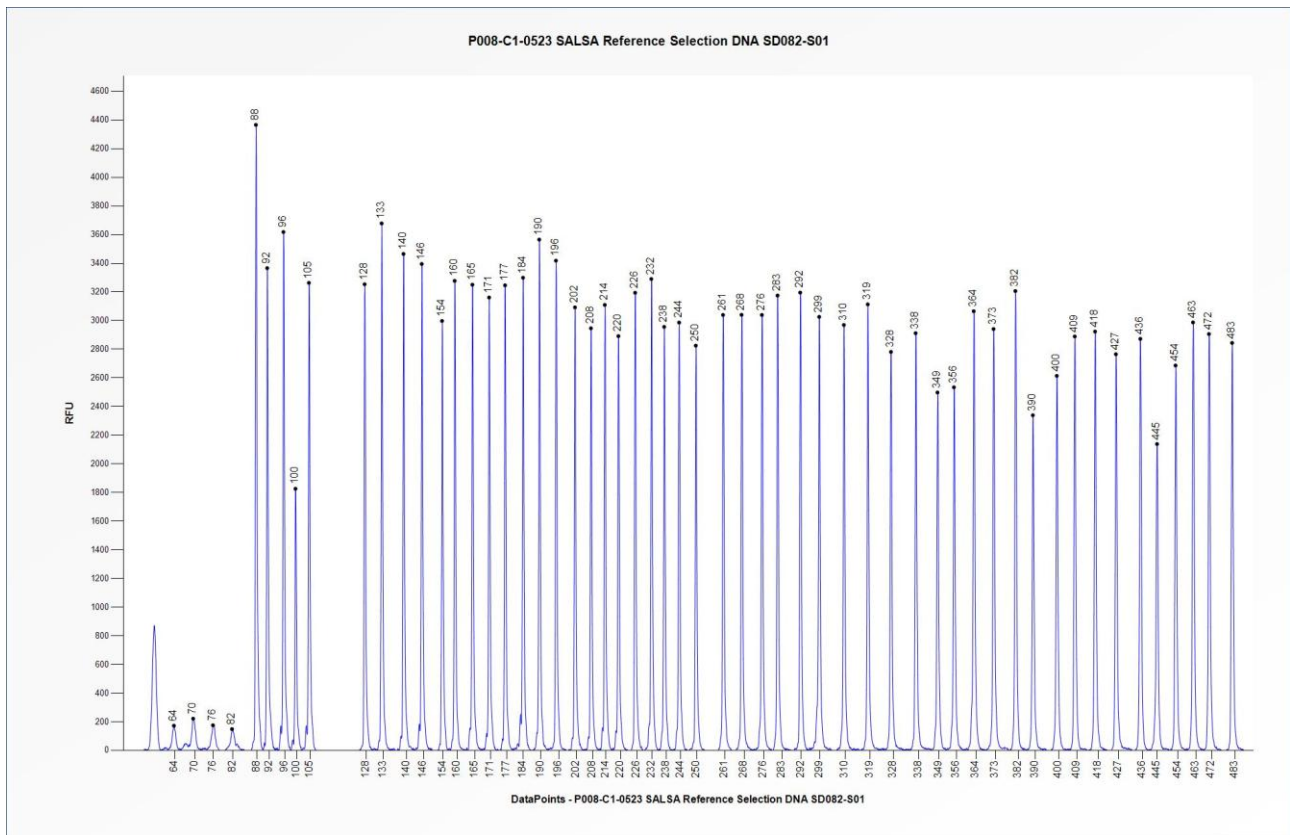




# Certificate of Analysis

## SALSA MLPA Probemix P008-C1 PMS2 sample picture



**Figure 1.** Capillary electrophoresis pattern from SALSA Reference Selection DNA SD082-S01 (approximately 50 ng) analysed with SALSA MLPA Probemix P008 PMS2 (C1-0523). Reference Selection DNA SD082 has two copies for each of the ten SNP probe targets present in P008 PMS2.

**This lot was certified by MRC Holland on 08 September 2023.**

This certificate is a declaration of analysis at the time of the manufacturing process. All assays were run in compliance with manufacturer's instructions for use.

### Implemented changes in the COA

Version 03 – 8 May 2026 (6)

- Reference to tables in the Product Description removed from section Purpose.

Version 02 – 19 November 2024 (6)

- SALSA Reference Selection DNA SD082 removed from section Purpose.

Version 01 – 11 September 2023 (6)

- Not applicable, new document.