


Certificate of Analysis

SALSA® MLPA® Probemix P199 HEXA

Catalogue #	P199-025R, P199-050R, P199-100R	
Product name	SALSA® MLPA® Probemix P199 HEXA (hereafter: P199 HEXA)	
LOT	B3-0925	
Shipping conditions	Dry ice or cooling elements.	
	Expiration date: September 2030, when stored at recommended conditions.	
Quality control specifications	<ul style="list-style-type: none"> - Sufficient distance between peaks, absence of extra or shoulder peaks, and completeness of hybridisation of each individual probe, as tested on Applied Biosystems sequencer. - Standard deviation between the final ratios of each individual probe ≤ 0.10, when tested on 23 different DNA samples of healthy individuals, extracted by various methods. Note that the standard deviation for the mutation-specific probes is not determined because no signal is generated on DNA from healthy individuals. - Each individual probe meets reaction-specific criteria when tested on a single DNA sample under various experimental conditions. - No-DNA controls result in only five major peaks shorter than 121 nucleotides (nt): four Q-fragments at 64, 70, 76 and 82 nt, and one peak in the range of 0-40 nt corresponding to the unused portion of the fluorescent PCR primer. Non-specific peaks longer than 121 nt AND with a height <25% of the median of the four Q-fragments are not expected to affect MLPA reactions when sufficient (50-250 ng) sample DNA is used. 	Test result
		PASS

More information: www.mrcholland.com ; www.mrcholland.eu	
	MRC Holland BV; Willem Schoutenstraat 1 1057 DL, Amsterdam, The Netherlands
E-mail	info@mrcholland.com (information & technical questions) order@mrcholland.com (orders)
Phone	+31 888 657 200

Certificate of Analysis

P199-B3 HEXA sample pictures

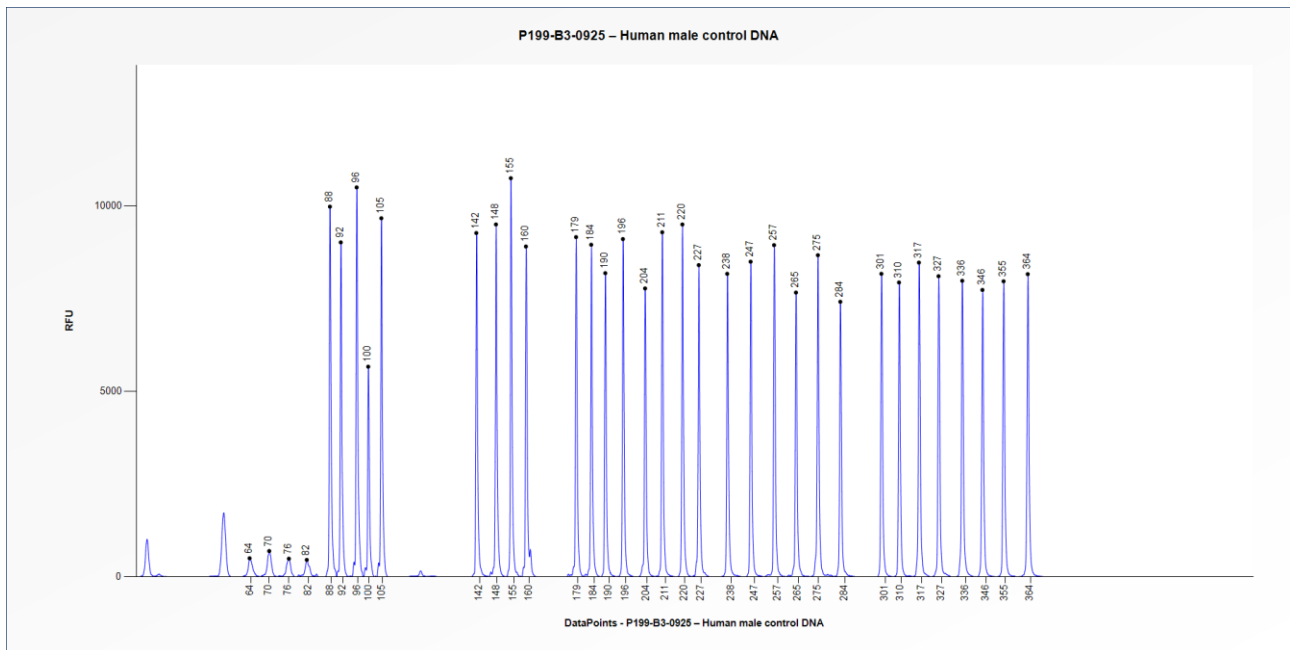


Figure 1. Capillary electrophoresis pattern from a sample of approximately 50 ng human male control DNA analysed with P199 HEXA (B3-0925).

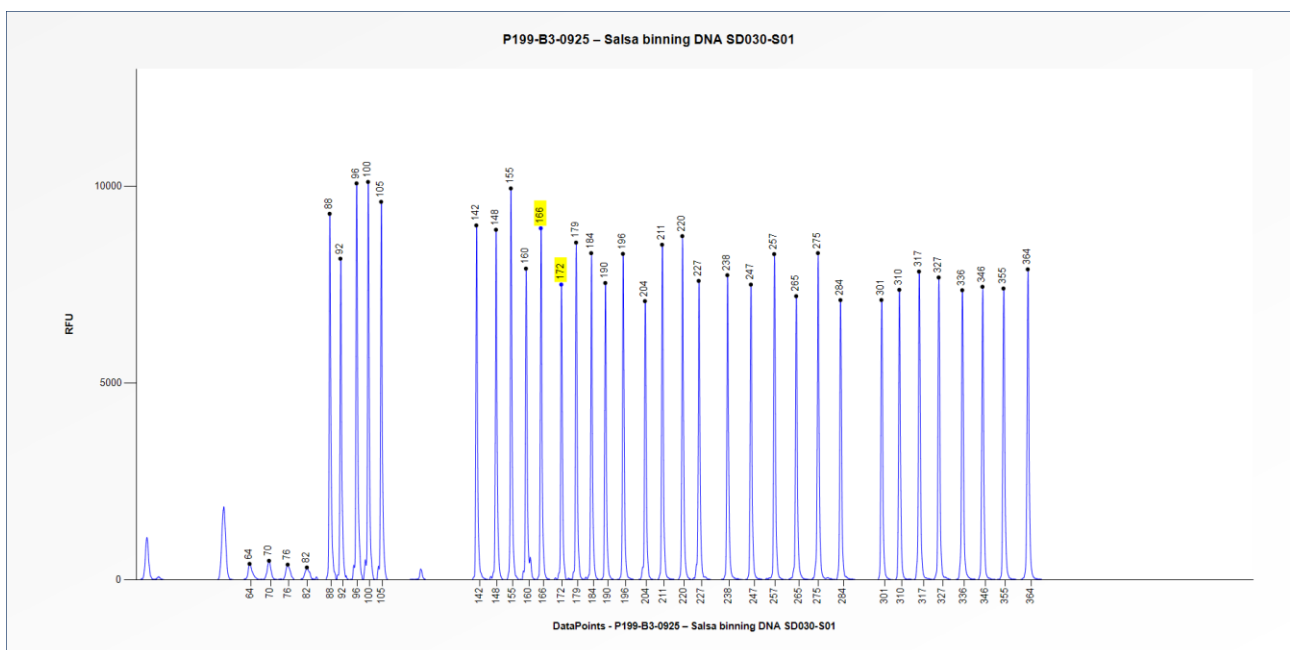


Figure 2. Capillary electrophoresis pattern from SALSA® Binning DNA SD030-S01 (approximately 50 ng) analysed with P199 HEXA (B3-0925). The location of the *HEXA* c.1278insTATC and *HEXA* IVS12+1G>C mutation-specific probes at 166 nt and 172 nt, respectively, are indicated.

This lot was certified by MRC Holland on 15 May 2026.

This certificate is a declaration of analysis at the time of the manufacturing process. All assays were run in compliance with manufacturer's instructions for use.

Implemented changes in the COA
Version 01 – 15 May 2026 (7) - Not applicable, new document.