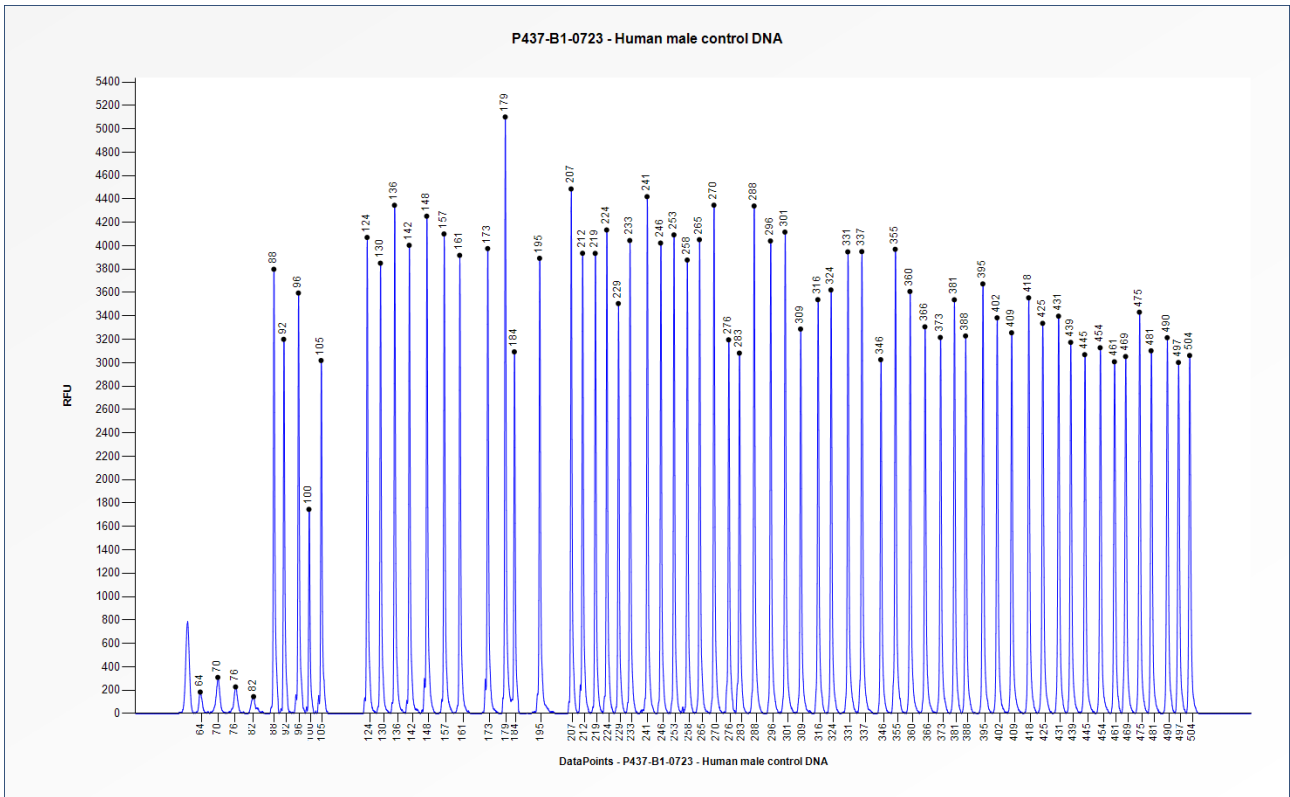


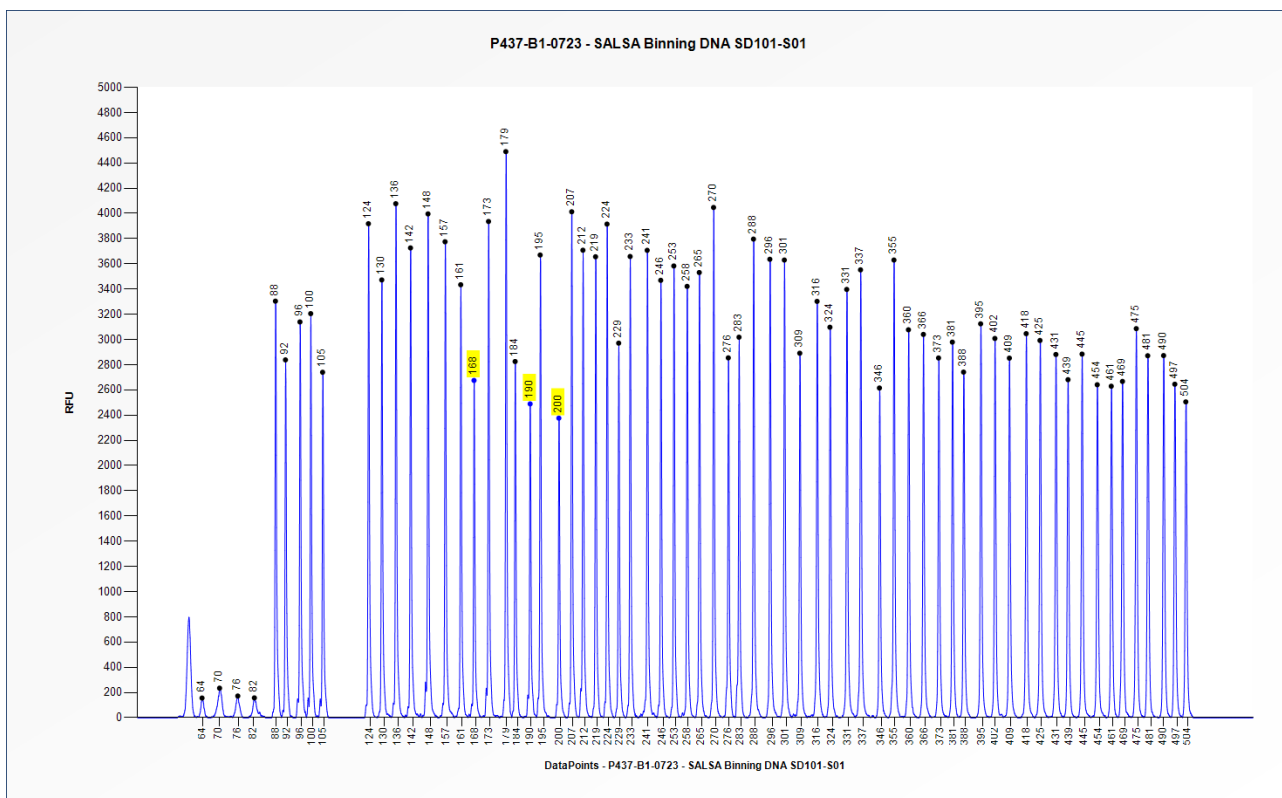


# Certificate of Analysis

## P437-B1 Familial MDS-AML sample pictures



**Figure 1.** Capillary electrophoresis pattern from a sample of approximately 50 ng human male control DNA analysed with P437 Familial MDS-AML (B1-0723). Please note that in some healthy control samples without the GATA2 c.1192C>T=p.R398W mutation, a low background signal (max. 5 % of the median peak height of all reference probes) at 168 nt in the electropherogram may appear, which indicates absence of this mutation.



**Figure 2.** Capillary electrophoresis pattern from SALSA® Binning DNA SD101-S01 (approximately 50 ng) analysed with P437 Familial MDS-AML (B1-0723). The location of the GATA2 probe (p.R398W=c.1192C>T) at 168 nt, GATA2 probe (p.T354M=c.1061C>T) at 190 nt and TERT probe (p.A1062T=c.3184G>A) at 200 nt is indicated.

**This lot was certified by MRC Holland on 15 May 2024.**

This certificate is a declaration of analysis at the time of the manufacturing process. All assays were run in compliance with manufacturer’s instructions for use.

Implemented changes in the COA
Version 02 – 23 April 2026 (7) - COA restructured and adapted to a new template. - SD070 is replaced with SD101.
Version 01 – 16 May 2024 (6) - Not applicable, new document.