





Certificate of Analysis

SALSA® MLPA® Probemix P265 PROC

| | | |
|---|--|-------------|
| Catalogue # | P265-025R, P265-050R, P265-100R | |
| Product name | Probemix P265 PROC | |
|  LOT | B4-0324 | |
|  | 25, 50, or 100 reactions. | |
| Shipping conditions | Dry ice or cooling elements. | |
|  | Store upon arrival between -25°C and -15°C. | |
|  | Expiration date: March 2029, when stored at recommended conditions. This product should not be frozen/thawed more than 25 times. | |
| Purpose | This product has been developed to determine the DNA copy number of the human <i>PROC</i> gene, as described in table 1 and 2 of the product description. This probemix is designed for use only in combination with SALSA MLPA reagent kits and Coffalyser.Net analysis software as described in the MLPA General Protocol. | |
| Quality control specifications | <ul style="list-style-type: none"> - Sufficient distance between peaks, absence of extra or shoulder peaks, and completeness of hybridisation of each individual probe, as tested on Applied Biosystems and Beckman/SCIEX GeXP sequencers. - Standard deviation of each individual probe ≤ 0.10, when tested on 23 different DNA samples of healthy individuals, extracted by various methods. - Each individual probe meets reaction-specific criteria when tested on a single DNA sample under various experimental conditions. - No-DNA controls result in only five major peaks shorter than 121 nucleotides (nt): four Q-fragments at 64, 70, 76 and 82 nt, and one peak in the range of 0-40 nt corresponding to the unused portion of the fluorescent PCR primer. Non-specific peaks longer than 121 nt AND with a height <25% of the median of the four Q-fragments are not expected to affect MLPA reactions when sufficient (50-250 ng) sample DNA is used. | Test result |
| | | PASS |

None of the ingredients are derived from humans, animals, or pathogenic bacteria. Based on the concentrations present, none of the ingredients are hazardous as defined by the Hazard Communication Standard. **A Safety Data Sheet (SDS) is not required for these products:** none of the preparations contain dangerous substances (as per Regulation (EC) No 1272/2008 [EU-GHS/CLP] and amendments) at concentrations requiring distribution of an SDS (as per Regulation (EC) No 1272/2008 [EU-GHS/CLP] and 1907/2006 [REACH] and amendments). If spills occur, clean with water and follow appropriate site procedures.

| | |
|--|---|
| More information: www.mrcholland.com ; www.mrcholland.eu | |
|  | MRC Holland bv; Willem Schoutenstraat 1 1057 DL, Amsterdam, The Netherlands |
| E-mail | info@mrcholland.com (information & technical questions) order@mrcholland.com (orders) |
| Phone | +31 888 657 200 |

Certificate of Analysis

SALSA MLPA Probemix P265-B4 PROC sample picture

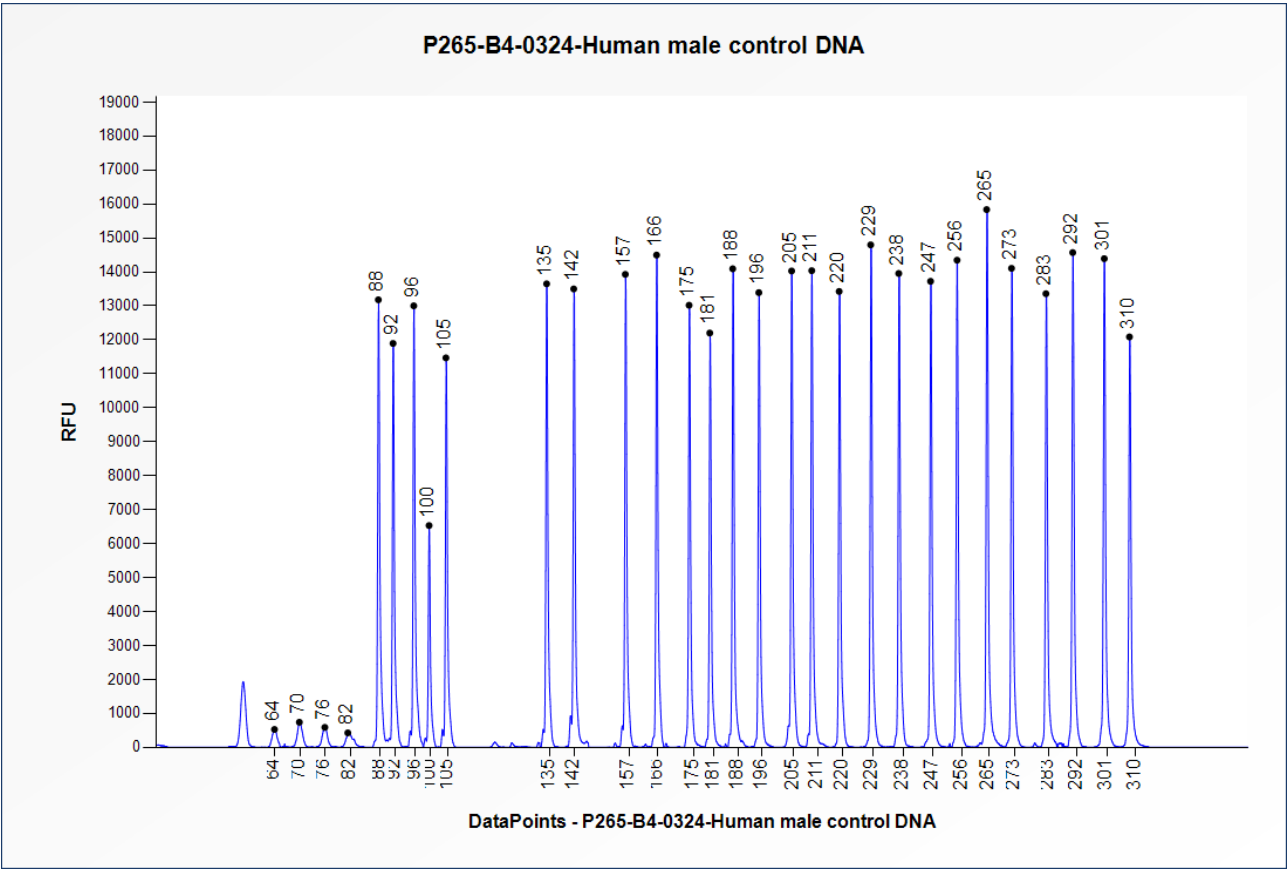


Figure 1. Capillary electrophoresis pattern from a sample of approximately 50 ng human male control DNA analysed with SALSA MLPA Probemix P265 PROC (B4-0324).

This lot was certified by MRC Holland on 17 July 2024.

This certificate is a declaration of analysis at the time of the manufacturing process. All assays were run in compliance with manufacturer’s instructions for use.

| Implemented changes in the COA |
|--|
| Version 01 – 17 July 2024 (6) - Not applicable, new document. |