




## Certificate of Analysis

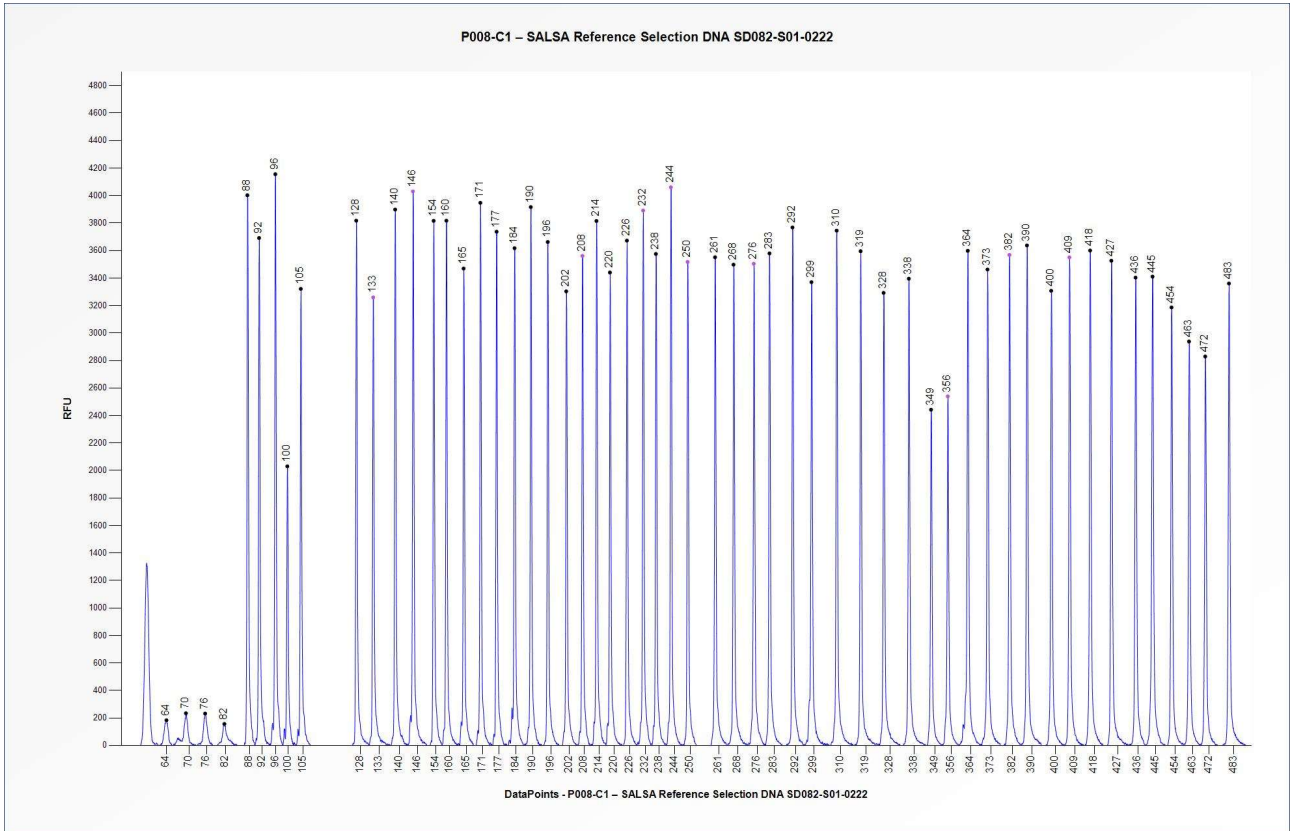
### SALSA® Reference Selection DNA SD082

|   |  |  |
|---|--|--|
| <b>Catalogue #</b>  | <b>SD082</b>   |  |
| <b>Product name</b>   | <b>SALSA Reference Selection DNA SD082</b>   |  |
| <b>LOT</b>  | <b>S01-0222</b>  |  |
|  | 6 reactions.   |  |
| Shipping conditions   | Dry ice or cooling elements.   |  |
|  | Store upon arrival between -25 °C and -15 °C.  |  |
|  | Expiry date: February 2027, when stored at recommended conditions.   |  |
| Purpose   | To be used with SALSA MLPA Probemix P008-C1 PMS2, SALSA MLPA Probemix P021-B1 SMA, SALSA MLPA Probemix P060-B2 SMA Carrier, SALSA MLPA reagent kits and Coffalyser.Net™ analysis software as described in the MLPA General Protocol and the corresponding Reference Selection DNA product description.   |  |
| Quality control specifications  | <ul style="list-style-type: none"> <li>- Reference Selection DNA SD082 has a diploid status for the following genes: <i>PMS2</i>, <i>PMS2CL</i>, <i>NAIP</i>, <i>SMN1</i> and <i>SMN2</i>, as well as for the reference probe target sequences of SALSA MLPA Probemix P008-C1 PMS2, SALSA MLPA Probemix P021-B1 SMA and SALSA MLPA Probemix P060-B2 SMA Carrier.</li> <li>- Signal-to-size drop or sloping in the Reference Selection DNA SD082 reactions should be similar (max 30% difference) as compared to arbitrarily chosen genomic samples known to be of sufficient quality for MLPA.</li> <li>- Concentration of Reference Selection DNA SD082 is between 8.0 and 12.5 ng/µl.</li> </ul> | Test result<br><br><br><br><br><br><br><br><br><br><b>PASS</b> |

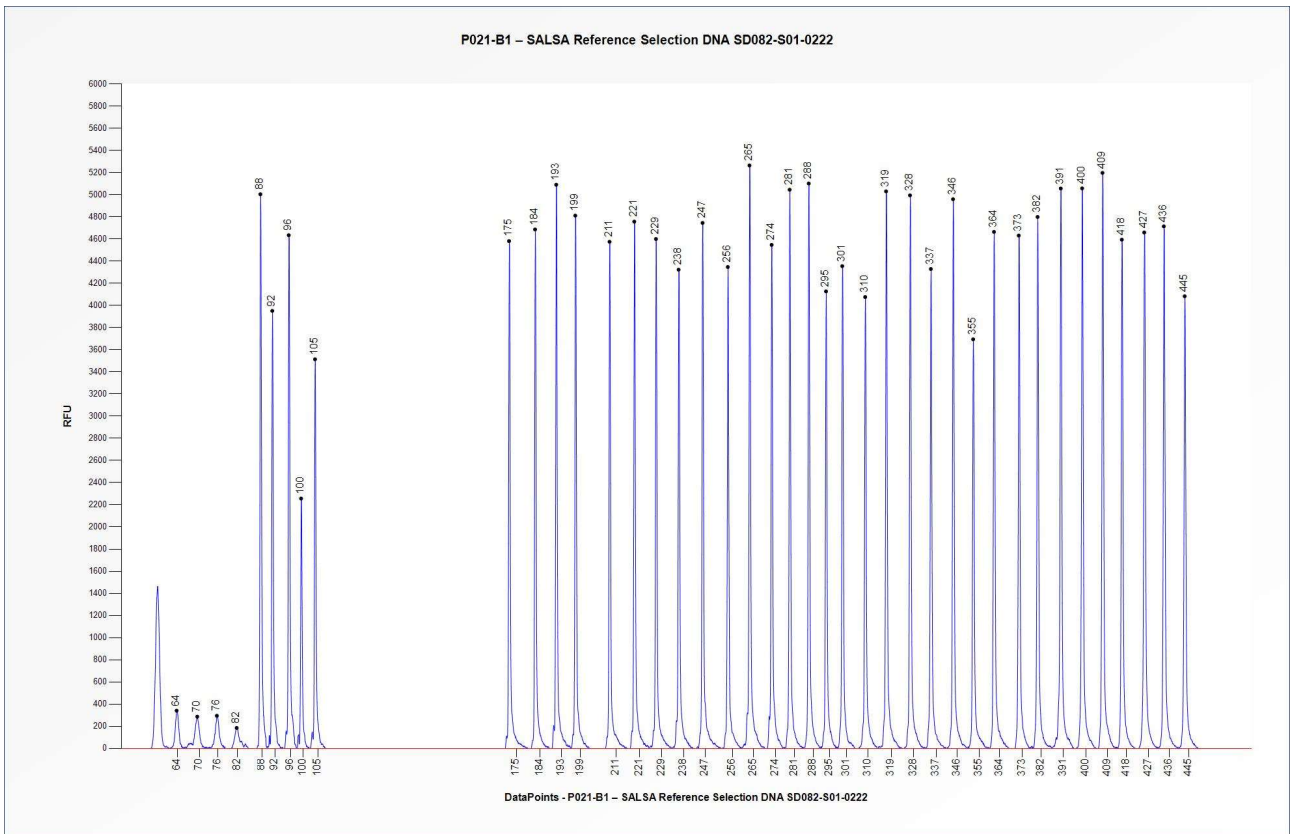
|   |   |
|---|---|
| <b>More information: <a href="http://www.mrcholland.com">www.mrcholland.com</a>; <a href="http://www.mrcholland.eu">www.mrcholland.eu</a></b> |   |
|    | MRC Holland bv; Willem Schoutenstraat 1<br>1057 DL, Amsterdam, The Netherlands  |
| E-mail  | <a href="mailto:info@mrcholland.com">info@mrcholland.com</a> (information & technical questions)<br><a href="mailto:order@mrcholland.com">order@mrcholland.com</a> (orders) |
| Phone   | +31 888 657 200   |

# Certificate of Analysis

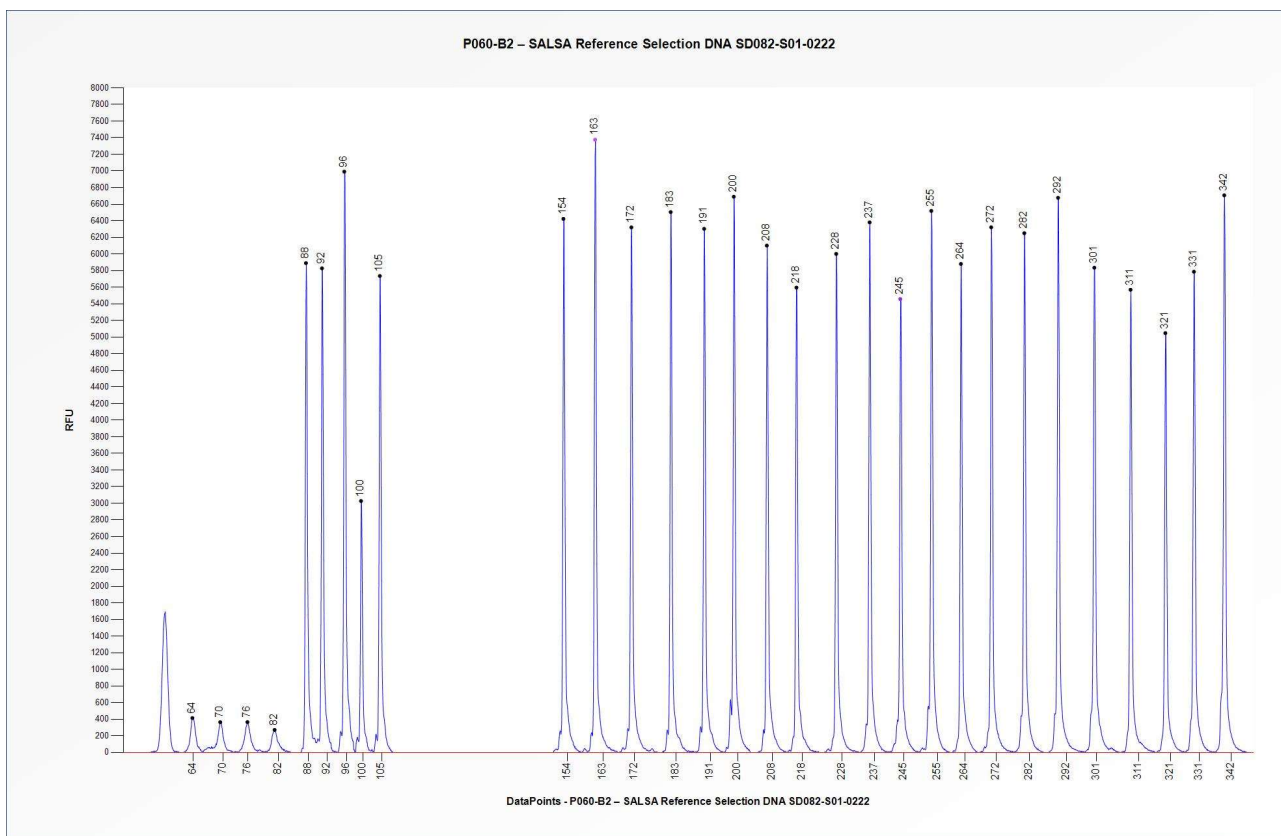
## SALSA® Reference Selection DNA SD082 sample pictures



**Figure 1.** Capillary electrophoresis pattern from SALSA Reference Selection DNA SD082-S01-0222 (approximately 50 ng) analysed with SALSA MLPA Probemix P008 PMS2 (C1-0421). Probe peak heights may vary between different lots of the P008-C1 probemix.



**Figure 2.** Capillary electrophoresis pattern from SALSA Reference Selection DNA SD082-S01-0222 (approximately 50 ng) analysed with SALSA MLPA Probemix P021 (B1-0619). Probe peak heights may vary between different lots of the P021-B1 probemix.



**Figure 3.** Capillary electrophoresis pattern from SALSA Reference Selection DNA SD082-S01-0222 (approximately 50 ng) analysed with SALSA MLPA Probemix P060 SMA Carrier (B2-0921). Probe peak heights may vary between different lots of the P060-B2 probemix.

**This lot was certified by MRC Holland on 06 May 2022.**

This certificate is a declaration of analysis at the time of the manufacturing process. All assays were run in compliance with manufacturer’s instructions for use.

| Implemented changes in the COA                                    |
|---|
| Version 01 – 02 June 2022 (04)<br>- Not applicable, new document. |