




Certificate of Analysis

SALSA® Reference Selection DNA SD072

Catalogue #	SD072	
Product name	SALSA Reference Selection DNA SD072	
LOT	S01-0720	
	20 reactions.	
Shipping conditions	Dry ice or cooling elements.	
	Store upon arrival between -25 °C and -15 °C.	
	Expiry date: July 2025, when stored at recommended conditions.	
Purpose	To be used with SALSA MLPA Probemix P236-B1 CFH Region, SALSA MLPA reagent kits and Coffalyser.Net™ analysis software as described in the MLPA General Protocol and the corresponding Reference Selection DNA product description.	
Quality control specifications	<ul style="list-style-type: none"> - Reference Selection DNA SD072 has a diploid status for the following genes: <i>CFH</i>, <i>CFHR1</i>, <i>CFHR2</i>, <i>CFHR3</i>, <i>CFHR4</i> and <i>CFHR5</i>, as well as for the reference probe target sequences of SALSA MLPA Probemix P236-B1 CFH Region. - Signal-to-size drop or sloping in the Reference Selection DNA SD072 reactions should be similar (max 30% difference) as compared to arbitrarily chosen genomic samples known to be of sufficient quality for MLPA. - Concentration of Reference Selection DNA SD072 is between 9.0 and 10.5 ng/µl. 	Test result
		PASS

More information: www.mrcholland.com ; www.mrcholland.eu	
	MRC Holland bv; Willem Schoutenstraat 1 1057 DL, Amsterdam, The Netherlands
E-mail	info@mrcholland.com (information & technical questions) order@mrcholland.com (orders)
Phone	+31 888 657 200

Certificate of Analysis

SALSA® Reference Selection DNA SD072 sample picture

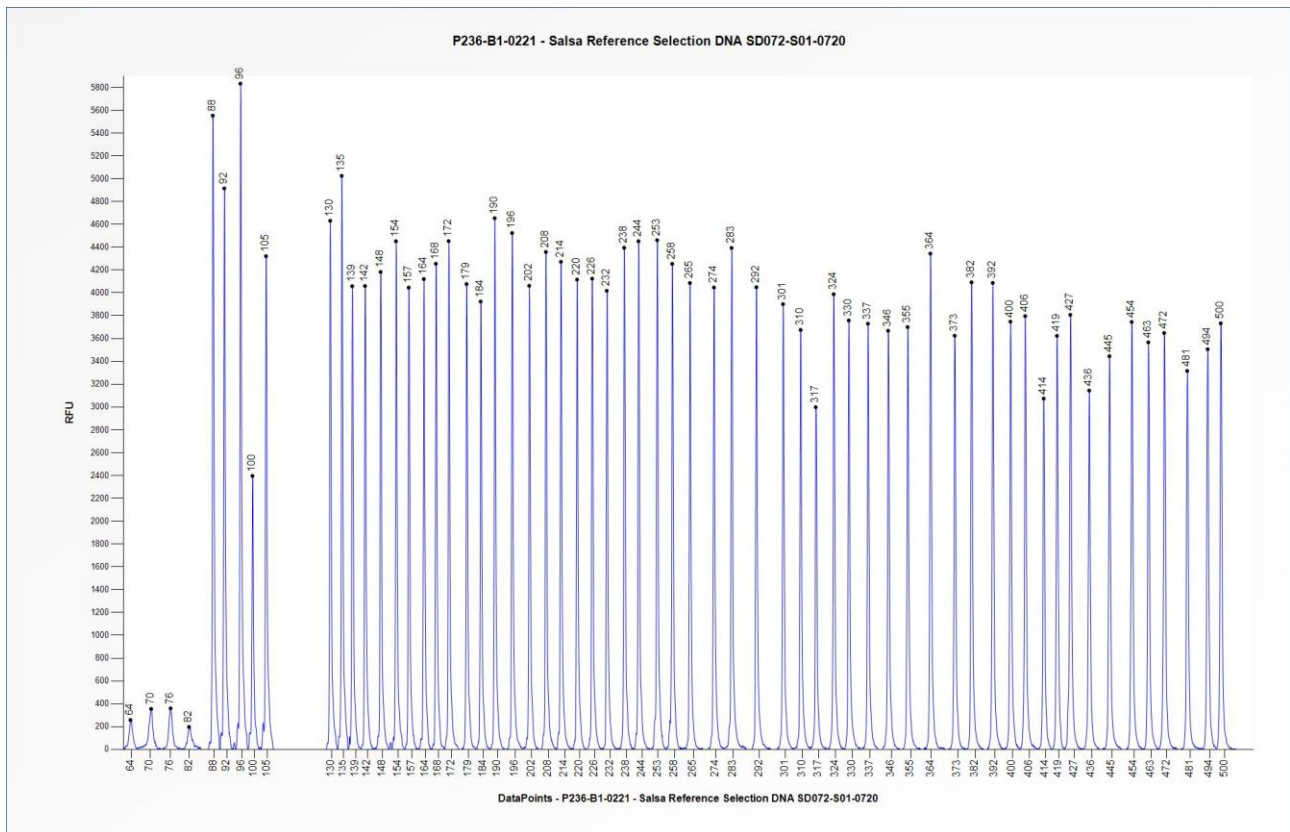


Figure 1. Capillary electrophoresis pattern from SALSA Reference Selection DNA SD072-S01-0720 (approximately 50 ng) analysed with SALSA MLPA Probemix P236 CFH Region (B1-0221). Probe peak heights may vary between different lots of the P236-B1 probemix.

This lot was certified by MRC Holland on 13 August 2020.

This certificate is a declaration of analysis at the time of the manufacturing process. All assays were run in compliance with manufacturer's instructions for use.

Implemented changes in the COA

Version 03 – 03 November 2021 (04)

- COA restructured and adapted to a new template.
- Information on probemix P008-C1 removed.

Version 02 – 12 May 2021 (03)

- Information on probemix P236-B1 added.

Version 01 – 14 August 2020 (03)

- Not applicable, new document.