





## Certificate of Analysis

### SALSA® MLPA® Probemix P406 CMT2

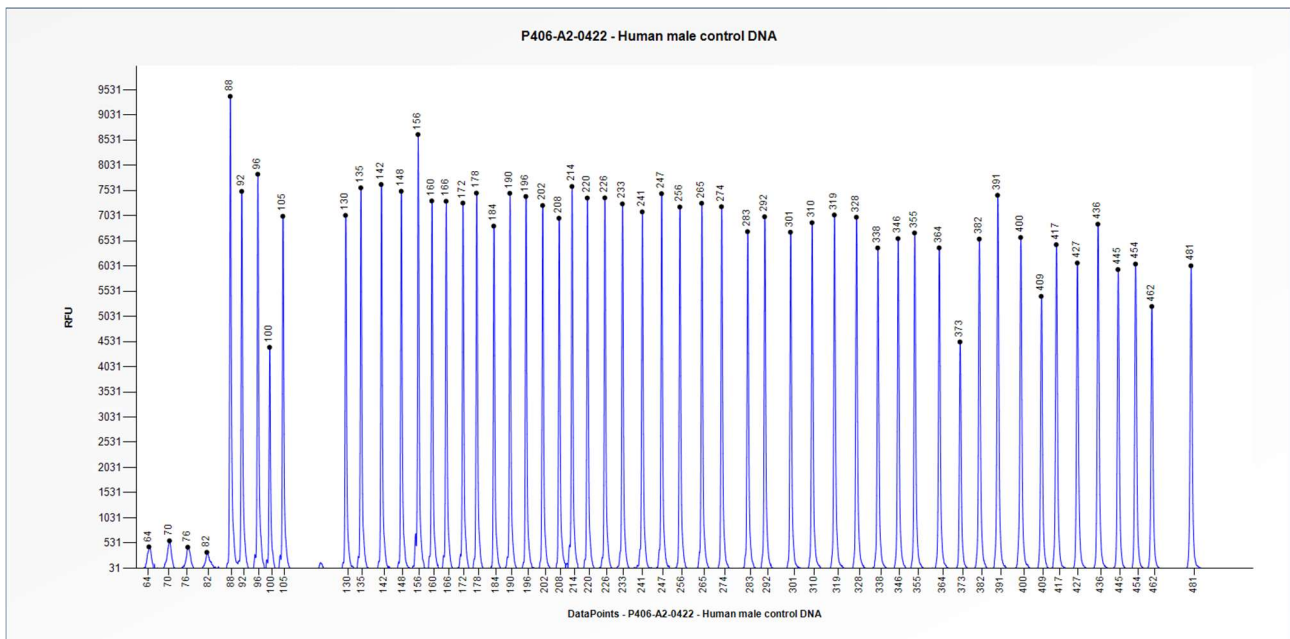
|   |  |             |
|---|--|-------------|
| Catalogue #   | P406-025R, P406-050R, P406-100R  |             |
| Product name  | Probemix P406 CMT2   |             |
|  LOT | A2-0422  |             |
|      | 25, 50, or 100 reactions.  |             |
| Shipping conditions   | Dry ice or cooling elements.   |             |
|      | Store upon arrival between -25°C and -15°C.  |             |
|      | Expiration date: April 2027, when stored at recommended conditions. This product should not be frozen/thawed more than 25 times.   |             |
| Purpose   | This product has been developed to determine the DNA copy number of the human <i>RAB7A</i> , <i>GARS</i> , <i>HSPB1</i> , <i>HSPB8</i> , and <i>SPTLC1</i> genes, as described in table 1 and 2 of the product description. This probemix is designed for use only in combination with SALSA MLPA reagent kits and Coffalyser.Net analysis software as described in the MLPA General Protocol.   |             |
| Quality control specifications  | <ul style="list-style-type: none"> <li>- Sufficient distance between peaks, absence of extra or shoulder peaks, and completeness of hybridisation of each individual probe, as tested on Applied Biosystems and Beckman/SCIEX GeXP sequencers.</li> <li>- Standard deviation of each individual probe <math>\leq 0.10</math>, when tested on 23 different DNA samples of healthy individuals, extracted by various methods.</li> <li>- Each individual probe meets reaction-specific criteria when tested on a single DNA sample under various experimental conditions.</li> <li>- No-DNA controls result in only five major peaks shorter than 121 nucleotides (nt): four Q-fragments at 64, 70, 76 and 82 nt, and one peak in the range of 0-40 nt corresponding to the unused portion of the fluorescent PCR primer. Non-specific peaks longer than 121 nt AND with a height &lt;25% of the median of the four Q-fragments are not expected to affect MLPA reactions when sufficient (50-250 ng) sample DNA is used.</li> </ul> | Test result |
|   |  | PASS        |

None of the ingredients are derived from humans, animals, or pathogenic bacteria. Based on the concentrations present, none of the ingredients are hazardous as defined by the Hazard Communication Standard. **A Safety Data Sheet (SDS) is not required for these products:** none of the preparations contain dangerous substances (as per Regulation (EC) No 1272/2008 [EU-GHS/CLP] and amendments) at concentrations requiring distribution of an SDS (as per Regulation (EC) No 1272/2008 [EU-GHS/CLP] and 1907/2006 [REACH] and amendments). If spills occur, clean with water and follow appropriate site procedures.

|   |   |
|---|---|
| More information: <a href="http://www.mrcholland.com">www.mrcholland.com</a> ; <a href="http://www.mrcholland.eu">www.mrcholland.eu</a> |   |
|    | MRC Holland bv; Willem Schoutenstraat 1<br>1057 DL, Amsterdam, The Netherlands  |
| E-mail  | <a href="mailto:info@mrcholland.com">info@mrcholland.com</a> (information & technical questions)<br><a href="mailto:order@mrcholland.com">order@mrcholland.com</a> (orders) |
| Phone   | +31 888 657 200   |

# Certificate of Analysis

## SALSA MLPA Probemix P406-A2 CMT2 sample picture



**Figure 1.** Capillary electrophoresis pattern from a sample of approximately 50 ng human male control DNA analysed with SALSA MLPA Probemix P406 CMT2 (A2-0422).

**This lot was certified by MRC Holland on 10 August 2022.**

This certificate is a declaration of analysis at the time of the manufacturing process. All assays were run in compliance with manufacturer's instructions for use.

### Implemented changes in the COA

Version 01 – 10 August 2022 (6)  
- Not applicable, new document.