

Certificate of Analysis

SALSA MLPA Probemix P378-D1 MUTYH sample pictures

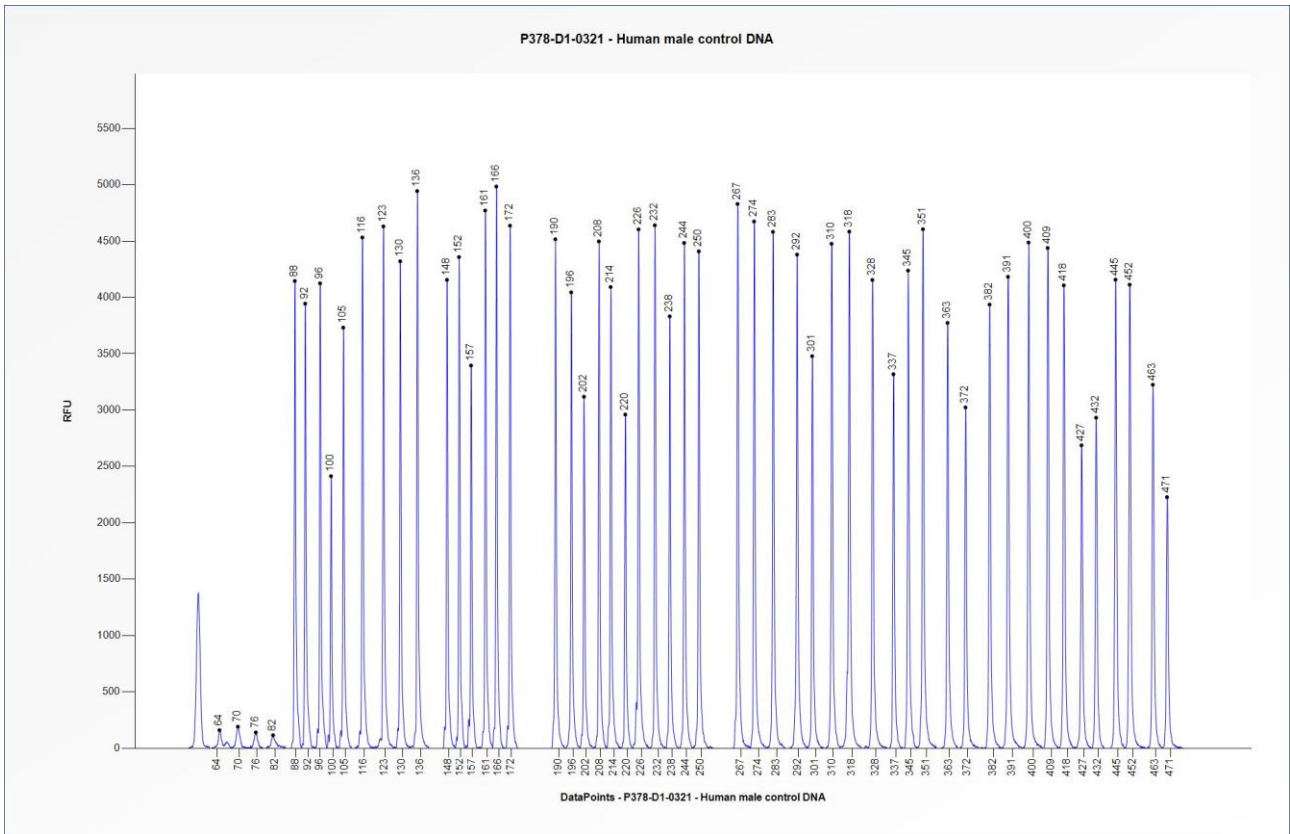


Figure 1. Capillary electrophoresis pattern from a sample of approximately 50 ng human male control DNA analysed with SALSA MLPA Probemix P378 MUTYH (D1-0321).

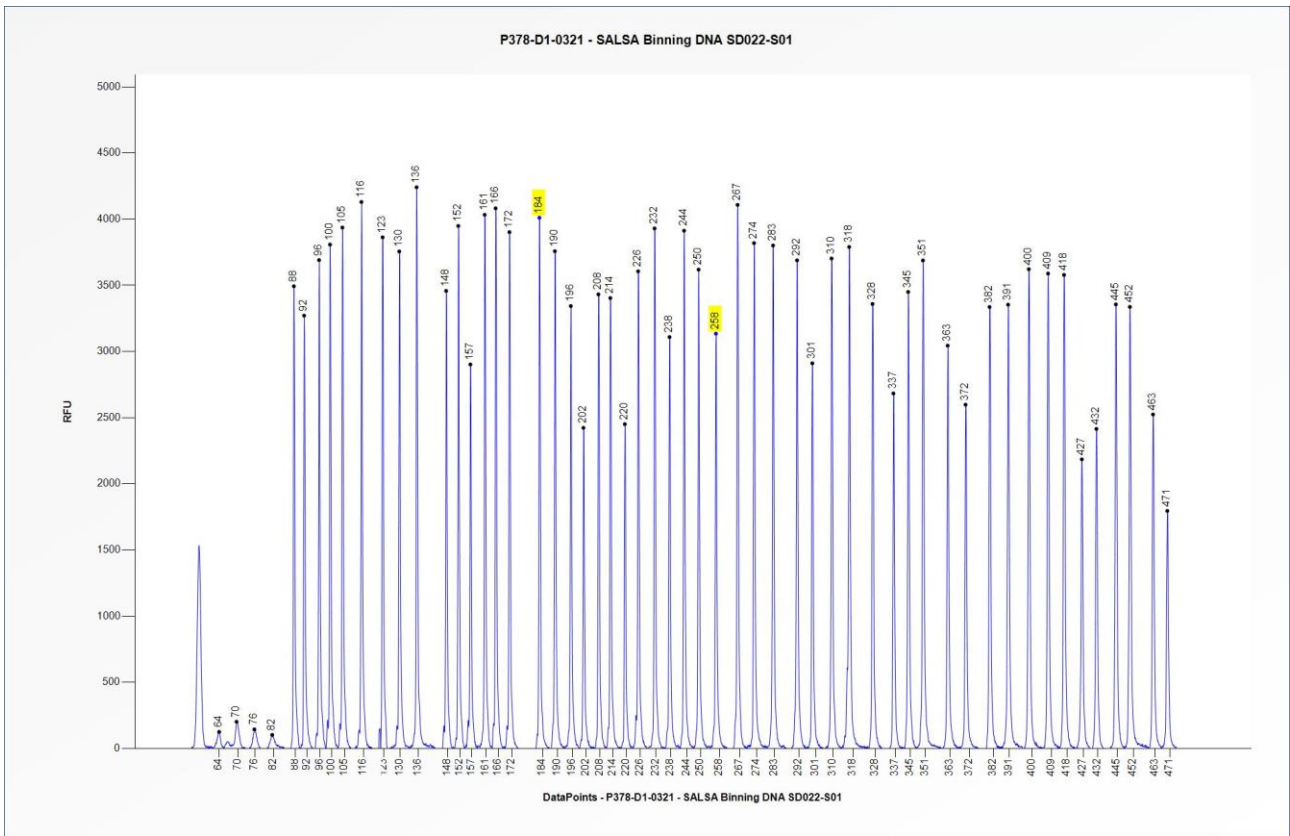


Figure 2. Capillary electrophoresis pattern from SALSA Binning DNA SD022-S01 (approximately 50 ng) analysed with SALSA MLPA Probemix P378 MUTYH (D1-0321). The location of the *MUTYH* c.536A>G (p.Tyr179Cys) and c.1187G>A (p.Gly396Asp) mutation-specific probes at 184 nt and 258 nt, respectively, are indicated.

This lot was certified by MRC Holland on 26 October 2021.

This certificate is a declaration of analysis at the time of the manufacturing process. All assays were run in compliance with manufacturer’s instructions for use.

Implemented changes in the COA
Version 01– 26 October 2021 (6) - Not applicable, new document.