

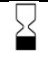



Certificate of Analysis

SALSA® Reference Selection DNA SD072

Catalogue #	SD072	
Product name	SALSA® Reference Selection DNA SD072	
LOT	S01-0720	
	20 reactions.	
Shipping conditions	Dry ice or cooling elements.	
	Store upon arrival between -25 °C and -15 °C.	
	Expiration date: July 2025, when stored at recommended conditions.	
Use	To be used with SALSA MLPA Probemix P008-C1 (PMS2) or P236-B1 (CFH Region) and SALSA MLPA reagent kits as described in the MLPA General Protocol and the corresponding Reference Selection DNA product description.	
Quality Test 1	SD072 has a diploid status for the following genes: <i>PMS2</i> and <i>PMS2CL</i> as well as the reference probe target sequences of the P008-C1 probemix. And SD072 has a diploid status for the genes <i>CFH</i> , <i>CFHR1</i> , <i>CFHR2</i> , <i>CFHR3</i> , <i>CFHR4</i> and <i>CFHR5</i> as well as the reference probe target sequences of the P236-B1 probemix.	PASS
Quality Test 2	Signal-to-size drop or sloping in the SD072 reactions should be similar (max 30% difference) as compared to arbitrarily chosen genomic samples known to be of sufficient quality for MLPA.	PASS
Quality Test 3	Concentration of SD072 is between 9.0 and 10.5 ng/µl.	PASS

Based on the concentrations present, none of the ingredients are hazardous as defined by the Hazard Communication Standard. **A Safety Data Sheet (SDS) is not required for these products:** none of the preparations contain dangerous substances (as per Regulation (EC) No 1272/2008 [EU-GHS/CLP] and amendments) at concentrations requiring distribution of an SDS (as per Regulation (EC) No 1272/2008 [EU-GHS/CLP] and 1907/2006 [REACH] and amendments). If spills occur, clean with water and follow appropriate site procedures.

More information: www.mlpa.com; www.mlpa.eu	
	MRC-Holland bv; Willem Schoutenstraat 1 1057 DL, Amsterdam, The Netherlands
E-mail	info@mlpa.com (information & technical questions); order@mlpa.com (orders)
Phone	+31 888 657 200

Certificate of Analysis

SALSA® Reference Selection DNA SD072 sample pictures

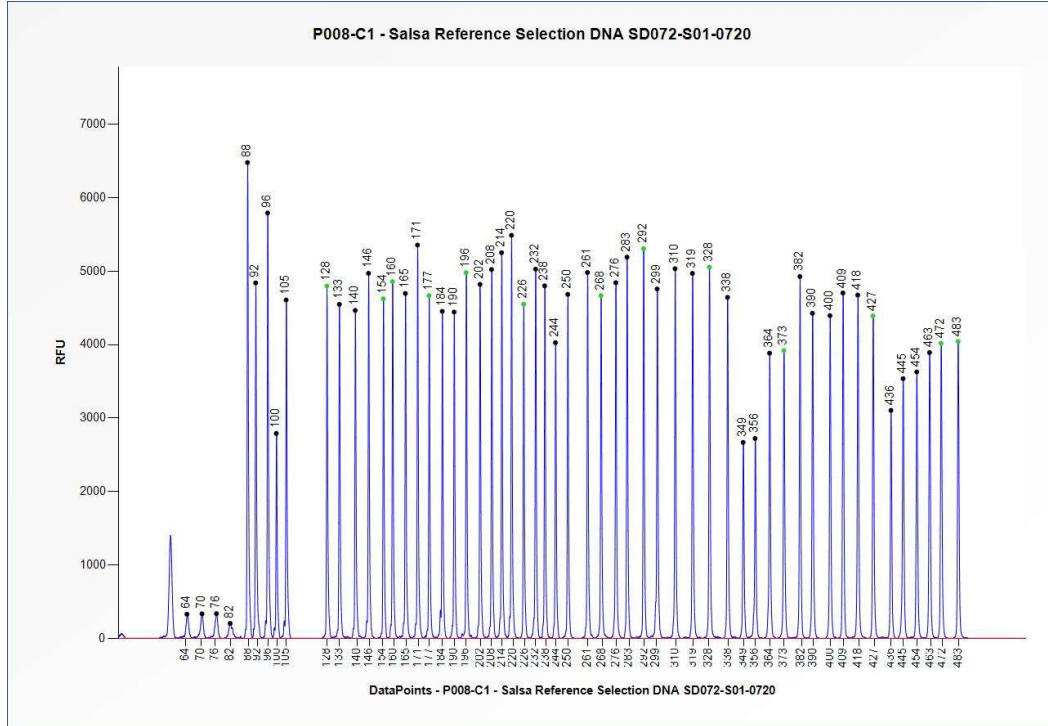


Figure 1. Capillary electrophoresis pattern from SD072-S01-0720 SALSA Reference Selection DNA (approximately 50 ng) analysed with SALSA MLPA Probemix P008 PMS2 (C1-1018). Probe peak heights may vary between probemix version C1 lots.

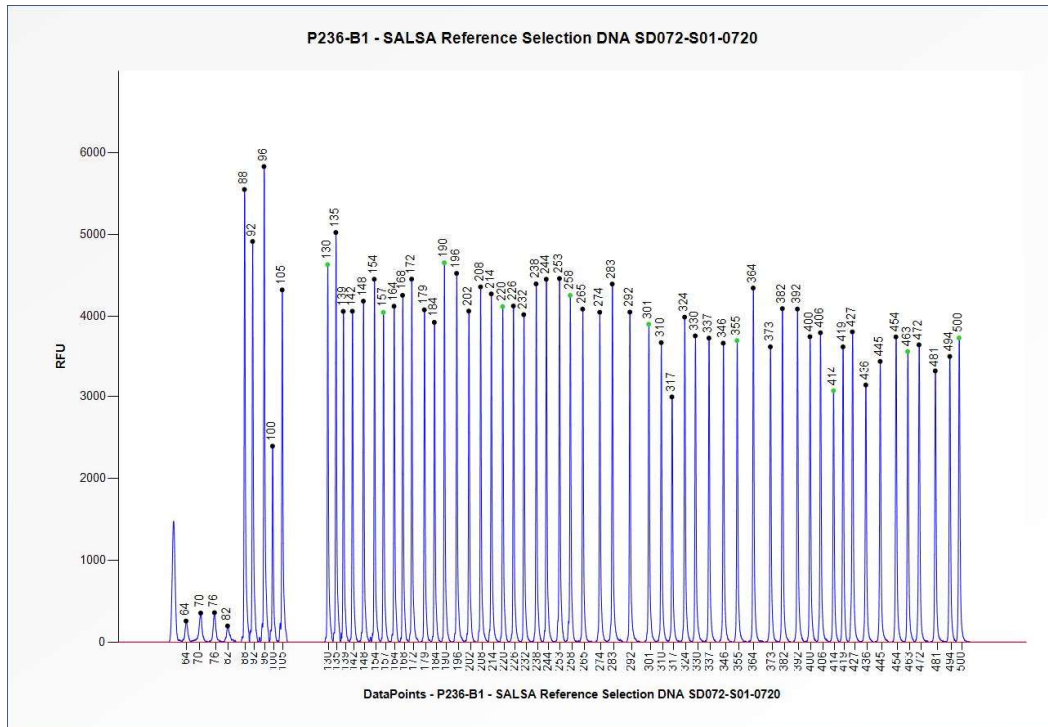


Figure 2. Capillary electrophoresis pattern from SD072-S01-0720 SALSA Reference Selection DNA (approximately 50 ng) analysed with SALSA MLPA Probemix P236 CFH Region (B1-0221). Probe peak heights may vary between probemix version B1 lots.

Certificate of Analysis

This lot was certified by MRC-Holland on 13 August 2020.

This certificate is a declaration of analysis at the time of the manufacturing process. All assays were run in compliance with manufacturer's instructions for use.

Implemented changes in the COA
<i>Version 02 – 12 May 2021 (03)</i> <ul style="list-style-type: none">- Information on probemix P236-B1 was added. <i>Version 01 – 14 August 2020 (03)</i> <ul style="list-style-type: none">- Not applicable, new document.