

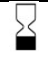



Certificate of Analysis SALSA® Binning DNA SD078

Catalogue #	SD078	
Product name	SALSA® Binning DNA SD078	
LOT	S01-0318	
	6 reactions.	
Shipping conditions	Dry ice or cooling elements.	
	Store upon arrival between -25 °C and -15 °C.	
	Expiration date: March 2023, when stored at recommended conditions.	
Use	To be used with SALSA MLPA P190-D1 probemix (CHEK2) and SALSA MLPA reagent kits as described in the MLPA General Protocol and the corresponding probemix product description.	
Quality Test 1	The mutation-specific probe, as described in the product description, produces a signal at the designed length.	PASS
Quality Test 2	The signal of the mutation-specific probe when tested with wild-type genomic DNA is <5% of the peak height generated when tested with SD078 SALSA Binning DNA.	PASS
Quality Test 3	The signal of the mutation-specific probe when tested with SD078 SALSA Binning DNA is at least 15% in peak height of the average probe signal of the 10 neighbouring probes and is not > 25% higher than any of the 10 neighbouring probes.	PASS
Quality Test 4	The 105 nt chromosome Y specific control probe should generate a signal on SD078 SALSA Binning DNA which is similar (+/-20%) to the signal obtained on wild-type male genomic DNA.	PASS
Quality Test 5	All SALSA MLPA probemix P190 (CHEK2) probes, other than the mutation-specific probe, show normal signals, similar (+/-20%) to the peak pattern obtained on wild-type genomic DNA.	PASS

Based on the concentrations present, none of the ingredients are hazardous as defined by the Hazard Communication Standard. **A Safety Data Sheet (SDS) is not required for these products:** none of the preparations contain dangerous substances (as per Regulation (EC) No 1272/2008 [EU-GHS/CLP] and amendments) at concentrations requiring distribution of an SDS (as per Regulation (EC) No 1272/2008 [EU-GHS/CLP] and 1907/2006 [REACH] and amendments). If spills occur, clean with water and follow appropriate site procedures.

More information: www.mlpa.com; www.mlpa.eu	
	MRC-Holland bv; Willem Schoutenstraat 1 1057 DL, Amsterdam, The Netherlands
E-mail	info@mlpa.com (information & technical questions); order@mlpa.com (orders)
Phone	+31 888 657 200

Certificate of Analysis
SALSA® Binning DNA SD078 sample pictures

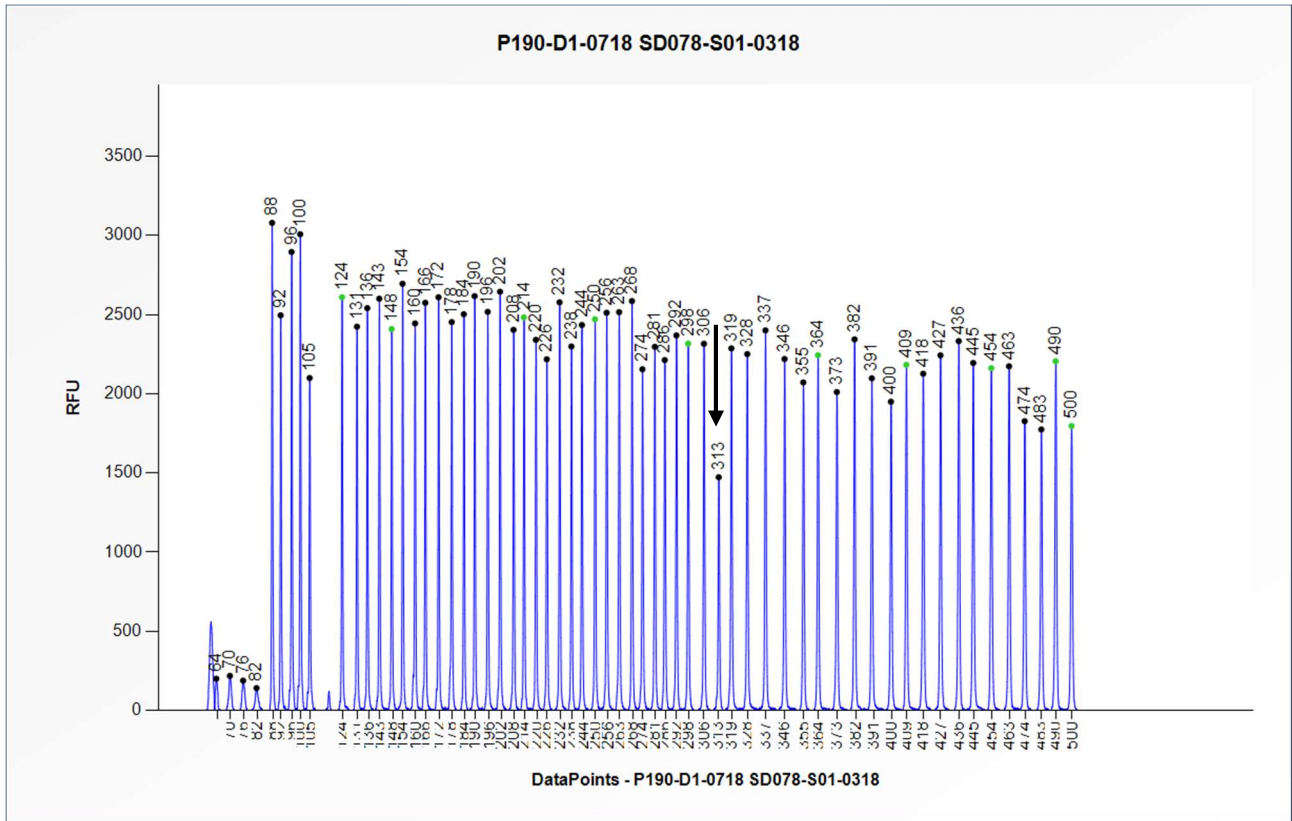


Figure 1. Capillary electrophoresis pattern from SD078-S01-0318 SALSA Binning DNA (approximately 50 ng) analysed with SALSA MLPA probemix P190 CHEK2 (D1-0718). The location of the CHEK2 1100delC mutation-specific probe at 313 nt is indicated. Probe peak heights may vary between probemix version D1 lots.

Certificate of Analysis

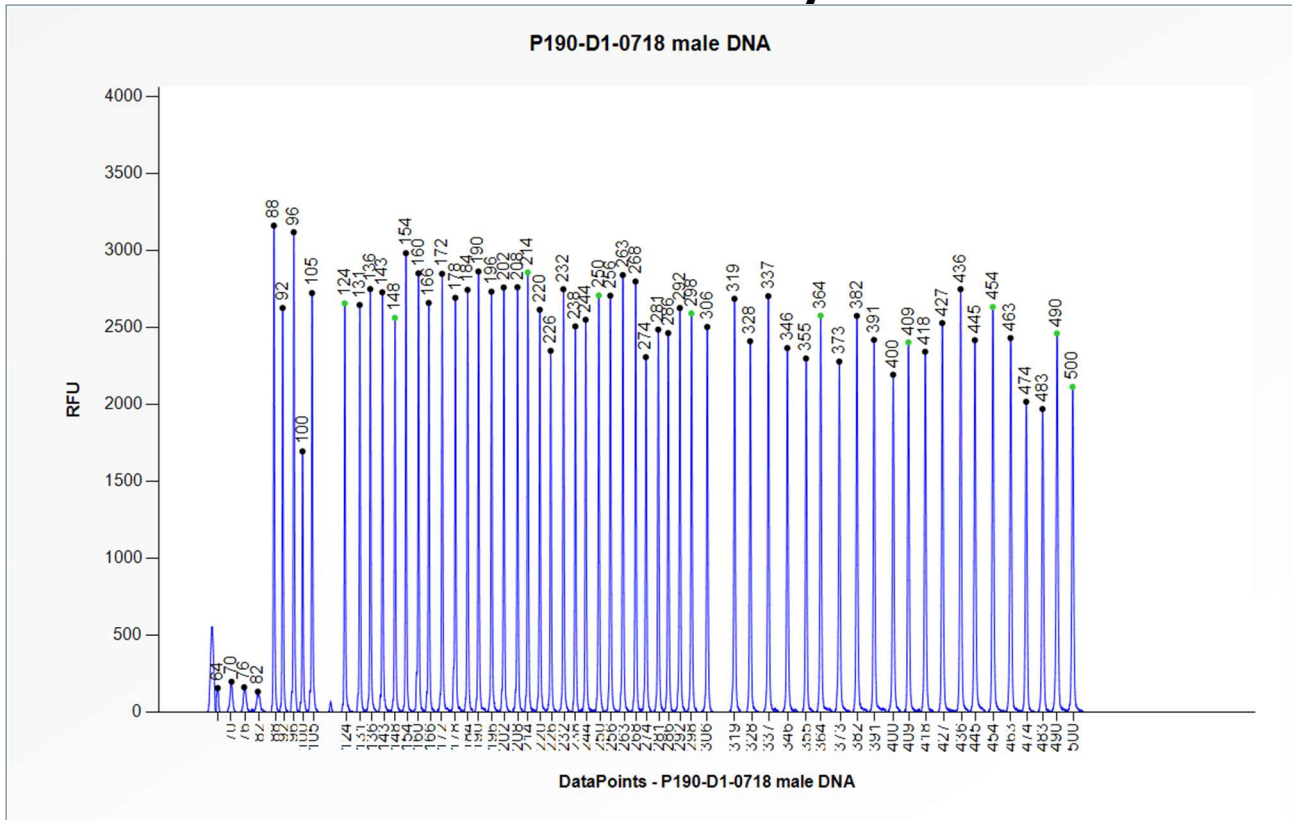


Figure 2. Capillary electrophoresis pattern from a sample of approximately 50 ng human male wild-type genomic DNA analysed with SALSA MLPA probemix P190 CHEK2 (D1-0718). Probe peak heights may vary between probemix version D1 lots.

This lot was certified by MRC-Holland on 09 October 2018.

This certificate is a declaration of analysis at the time of the manufacturing process. All assays were run in compliance with manufacturer’s instructions for use.

Implemented changes in the COA

Version 02 – 15 October 2020 (04)

- COA adapted to a new template.

Version 01 – 09 October 2018 (03)

- Not applicable, new document.